



"Guiding You to Career Success"
**Simply Learnt
Academy**
NEET(UG) | IIT-JEE | MHT-CET | SCIENCE

Admission Brochure

Academic Session: 2022-2024



IIT-JEE
(IIT/ENGG.)

MEDICAL
(NEET/AIIMS)

FOUNDATION
(NTSE + 8th, 9th & 10th)

BOARDS
(MHT-CET + SCIENCE)

TAKE THE FIRST STEP TOWARDS BECOMING
A DOCTOR OR AN ENGINEER

Head Office: 1st & 2nd Floor, Narayan Krupa Bldg. Opp. Kasturi Plaza, Dombivli East.

SIMPLY LEARNT ACADEMY

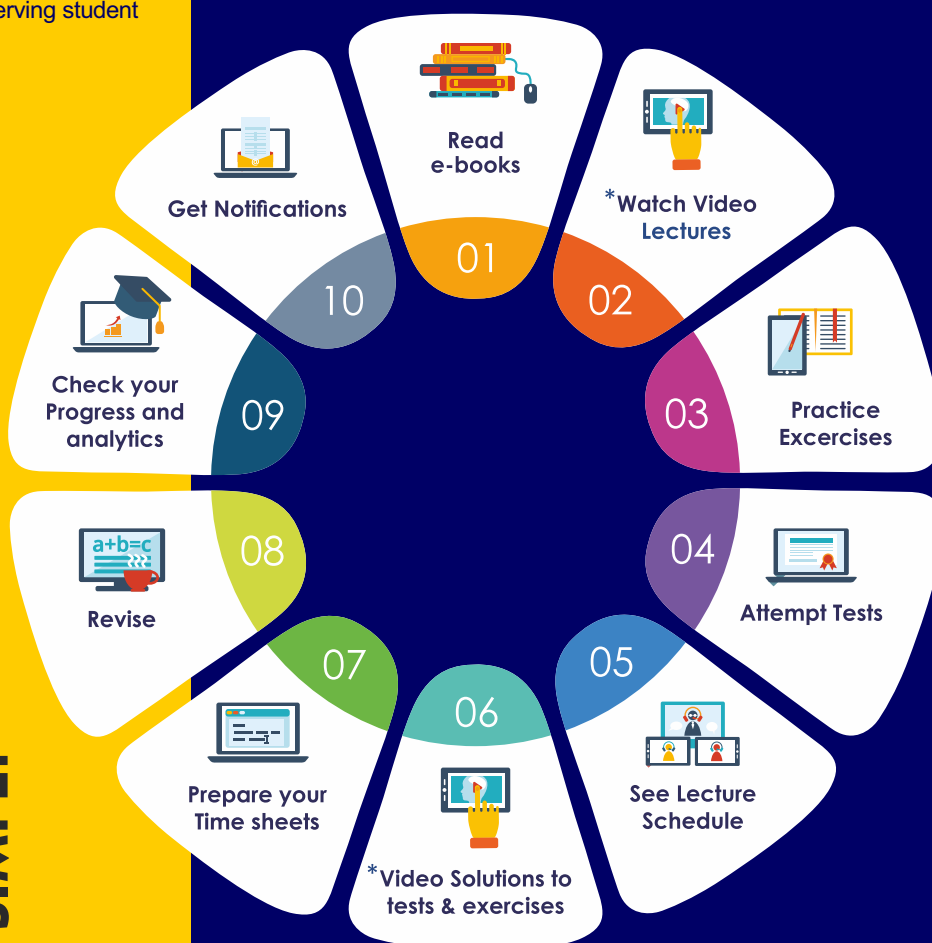
Simply Learnt Academy is an innovative E-Learning Program which provides high-quality learning content in form of:

We Teach In Digital Classroom Equipped With Interactive Smart Board

- ▶ SLA provides a unique blend of classroom learning and self-study at a very affordable cost. This rare combination makes the program unique and unparalleled.
- ▶ SLA offers courses for the classes XI & XII - each with two pronged focus: Board exams and Competitive exams like IIT-JEE, NEET.
- ▶ Now lack of quality content will never come between a deserving student and his/her dreams!

Video lectures in the program have been delivered by Simply Learnt's best faculty and concepts are explained through rich visuals and narratives. Each lecture can be repeated as many times as you want and can be played/paused whenever needed. This enables you to learn individually and ensure all the concepts to be clear. This also helps you to learn in an improved and systematic way. Apart from video lectures, each chapter also has exhaustive assessments and detailed reading material. There is also a unique 'Ask an Expert' feature through which you can ask your doubts to our faculty.

About SIMPLY





Meet With The NEET

SLA

Crack NEET Successfully with Quality Education in (SLA)

Start up with is the first of its kind program started by SLA to guarantee students of success in Medical competitive exam - NEET.

SLA takes pride in the quality Education of its academic delivery and this program gives assurance to students and their parents that once a student gets enrolled in SLA their success toward goal is guaranteed. This gives SLA a chance to continuously challenge the status quo and improve further.

We give you the assurance & success in NEET Exam through our expert faculty and quality education.

6 POINT EDGE



Rigorous Academic delivery from best in class through our faculty



In-depth automated performance analysis for improvement



Study material crafted & Designed by experts and access to tech resources



Pedagogy that is scientifically proven and refined through experience



Focused and high-quality Peer Group for conditioning on high competition level



Exceptional Track record of success that speaks for itself



BRIGHT

With The IIT

SLA

Crack IIT Successfully with Quality Education in (SLA)

Start up with is the first of its kind program started by SLA to guarantee students of success in Technical competitive exam - IIT-JEE.

SLA takes pride in the quality Education of its academic delivery and this program gives assurance to students and their parents that once a student gets enrolled in SLA their success toward goal is guaranteed. This gives SLA a chance to continuously challenge the status quo and improve further.

We give you the assurance & success in IIT Exam through our expert faculty and quality education.

6 POINT EDGE



Rigorous Academic delivery from best in class through our faculty



In-depth automated performance analysis for improvement



Study material crafted & Designed by experts and access to tech resources



Pedagogy that is scientifically proven and refined through experience



Focused and high-quality Peer Group for conditioning on high competition level



Exceptional Track record of success that speaks for itself

CLASSROOM PROGRAM

1 Year Course

For 12th Pass & 12th Studying Students

NEET-2022



12TH PASS STUDENTS

This course is differently designed for student who are passing 12th who have already attempted NEET exam earlier but did not qualify or want to improve their rank to get the best college of their choice in this course, students get to learn all the methods and tricks mandatory to crack the neet the complete 2 year syllabus of the class 11th & 12th will be covered with proper and detail depth of each concept number of teaching hours and mock tests will be more as compared to their 1 year course.

12TH STUDYING STUDENTS

The course is one year medical for the students moving in class 12th who will appear for neet in the next year the importance of the course will be such that the students who have inrolled offer class 11th will be benefited class 12th syllabus will be completed first as the student have to appear in board exam in present year. Once we complete the syllabus of class 12th we will start revision of class 11th through specially crafted & designed revision material followed by revision of class 12th the student will also be getting the test series to bench mark their preparations this will ensure robust preparation for NEET.

CLASS SCHEDULE: 4 days/week – 16 hours, Total 576 hours of Classroom Teaching

12th Pass students will have extra teaching and testing hours

STUDY CONTENT

Complete Study Material (6 Modules) - VMC provides its students with a set of study material that has been scientifically prepared to ensure comprehension of even the most difficult topics. The study material covers every aspect of each topic and is completely self-sufficient. Along with modules and workbooks, class 12th studying students will get Specially Designed CBSE Board Notes and Compendium.

KEY FEATURES

- ▶ This is an unified course in which students are taught in a systematic way, based on the pattern of NEET along with Class XII Board examination.
- ▶ Every topic is supported by a group of conceptual problems designed to give comprehensive understanding to the subject & improved speed through practice.
- ▶ Class Tests are conducted regularly in the class to assess the understanding of the topics by the students.
- ▶ Many of these would be in the form of Surprise Quizzes, with reward. so that students are forced to be regular in their preparation.

PRACTICE

- ▶ 24 - Monthly Tests
- ▶ 04 - Weekly Tests
- ▶ Personalized performance Dashboard
- ▶ All India test Series
- ▶ Detailed Test Analysis

CLASSROOM PROGRAM

1 Year Course

For 12th Pass & 12th Studying Students

IIT-JEE 2022

The course first builds on the class XII curriculum, followed by a quick revision module of the important concepts of class XI. The course then builds on IIT-JEE specific modules and extensive testing, evaluation analysis.



CLASS SCHEDULE: 12th Pass: 5-6 days & 39-40 hours per week | 12th Studying: 5-6 days & 39-40 hours per week
(Integrated Batches Only)

STUDY CONTENT

Complete study material: (6 Modules + 2) – SLA provides its students with a set of study material that has been scientifically prepared to ensure comprehension of even the most difficult topics. The study material covers students will get Specially Designed CBSE Board Notes and compendium of even the most difficult topics. The study material covers every aspect of each topic and is completely self – sufficient. Along with modules workbook. Class 12th studying students will get Specially Designed CBSE Board Notes and Compendium.

KEY FEATURES

For 12th Pass Students

- ▶ This course covers topics relevant from the class 11th & 12th syllabus that are important from IIT-JEE prospective. First the fundamental and then application of fundamentals is taught so that the student can face difficult topics with ease.

For 12th Studying Students

- ▶ Divided in two phases - The first phase focuses on the syllabus of class XII followed by review classes on XII syllabus of JEE (Mains) JEE (ADV) & (second phase) crash revision of XI.

For 12th Pass & 12th Studying Students

- ▶ Class Tests are conducted regularly in the class to assess the understanding of the topics by the students.
- ▶ The Test Series, held at regular intervals, simulate the pattern and timing of the actual IIT-JEE and are held at multiple Test Centres providing a real Exam-like experience to the students
- ▶ Many of these would be in the form of Surprise Quizzes, so that students are forced to be regular in their preparation.

*12th Pass students will have extra teaching and testing hours

PRACTICE

- ▶ 24 - test JEE Main Major Tests
- ▶ All India test Series
- ▶ 2 - Regular JEE Advanced Tests
- ▶ Detailed Test Analysis
- ▶ 10 JEE Main Mock Tests + 5 Advanced Mock tests (Full Syllabus)
- ▶ Personalized performance Dashboard

CHAMPION BATCH

CLASSROOM PROGRAM

2 Year Course

College Integrated Program (CIP)

IIT-JEE 2024

Integrated concept is the best for the student to learn the Board Syllabus as well as the preparation of entrance exams. Which help the students to understand with the vast content systematically with the help by the teachers of Simply Learn Academy, this save the time spent. This saves the time spent twice over the same topic, one in the school and the other in the Coaching center. It also aligns the syllabus with your school, to make sure everything goes synchronised.

Days are Meticulously Planned for Maximum Utilization of Time

06:30 am to 07:30 am - Study Hour (DTR)
07:30 am to 08:00 am - Test (C. B. T.) 25 Que.
10:30 am to 01:30 pm - Lecture (PCM)
01:30 pm to 02:00 pm - Lunch Break
02:00 pm to 03:30 pm - MCQs Solving Daily 50
03:30 pm to 03:45 pm - Break
03:45 pm to 05:00 pm - Daily Test - 25 Que. + SB
07:00 pm to 09:00 pm - Daily MCQs Solving 25
09:00 pm to 10:00 pm - Dinner Break
10:00 pm to 11:30 pm - Next Day Lecture Prep.
11:30 pm - Study Hour End of Day

CLASS SCHEDULE : 6 days & 36 hours per week during school hours, Total 2300 hours of classroom teaching

The three primary subjects to be tested viz Physics, Chemistry and Math are handled by the teachers of Simply Academy, the rest two are taken care of by the College teachers. The power of the program also lies in the fact that it leaves the weekends of the students for self-study and homework given by SLA and College teachers, and also saves the precious Travel time from home to Coaching center.

COURSE STRUCTURE

- ▶ Program covered in 3 phases
- ▶ Single program, comprehensive Study material with necessary Supplements
- ▶ Daily Test Conducting in SLA Center
- ▶ Mock Board Test papers
- ▶ Regular Test series (TS) for developing Exam temperament and Test taking approach
- ▶ Regular Feedback sessions
- ▶ Dedicated Operations Team for anytime feedback, in addition to periodic PMMs

BENEFITS TO THE STUDENTS

- ▶ Students enrolling in this program will have an integrated & synchronised study plan.
- ▶ The studies for both Boards as well as JEE Advanced, Main and other Engineering entrance exams will be controlled and executed by SLA.
- ▶ Student would not go through two separate schedules and classes for the same subject. There will be one class each of Physics, Chemistry and Mathematics that will take care of both the fronts.
- ▶ Complete Lab and other support will be provided to the students.
- ▶ School Integrated Program would provide trust for participation in co-curricular activities, which are important for the overall personality development.

SLA AND SCHOOL WILL ALSO AIM FOR

- ▶ Proficient & confident communication ability for each & every student.
- ▶ Motivational support from SLA team to individual student.

CHAMPION BATCH

CLASSROOM PROGRAM

2 Year Course

College Integrated Program (CIP)

NEET-2024

Integrated concept is the best for the student to learn the Board Syllabus as well as the preparation of entrance exams. Which help the students to understand with the vast content systematically with the help by the teachers of Simply Learnt Academy, this save the time spent. This saves the time spent twice over the same topic, one in the school and the other in the Coaching center. It also aligns the syllabus with your school, to make sure everything goes synchronised.

Days are Meticulously Planned for Maximum Utilization of Time

06:30 am to 07:30 am - Study Hour (DTR)
07:30 am to 08:00 am - Test (C. B. T.) 25 Que.
10:30 am to 01:30 pm - Lecture (PCM)
01:30 pm to 02:00 pm - Lunch Break
02:00 pm to 03:30 pm - MCQs Solving Daily 50
03:30 pm to 03:45 pm - Break
03:45 pm to 05:00 pm - Daily Test - 25 Que. + SB
07:00 pm to 09:00 pm - Daily MCQs Solving 25
09:00 pm to 10:00 pm - Dinner Break
10:00 pm to 11:30 pm - Next Day Lecture Prep.
11:30 pm - Study Hour End of Day

CLASS SCHEDULE : 6 days & 36 hours per week during school hours, Total 2300 hours of classroom teaching

The three primary subjects to be tested viz Physics, Chemistry and Biology are handled by the teachers of Simply Academy, the rest two are taken care of by the College teachers. The power of the program also lies in the fact that it leaves the weekends of the students for self-study and homework given by SLA and College teachers, and also saves the precious Travel time from home to Coaching center.

COURSE STRUCTURE

- ▶ Program covered in 3 phases
- ▶ Single program, comprehensive Study material with necessary Supplements
- ▶ Daily Test Conducting in SLA Center
- ▶ Mock Board Test papers
- ▶ Regular Test series (TS) for developing Exam temperament and Test taking approach
- ▶ Regular Feedback sessions
- ▶ Dedicated Operations Team for anytime feedback, in addition to periodic PMMs

BENEFITS TO THE STUDENTS

- ▶ Students enrolling in this program will have an integrated & synchronised study plan.
- ▶ The studies for both Boards as well as NEET, and other Medical entrance exams will be controlled and executed by SLA.
- ▶ Student would not go through two separate schedules and classes for the same subject. There will be one class each of Physics, Chemistry and Biology that will take care of both the fronts.
- ▶ Complete other support will be provided to the students.
- ▶ School Integrated Program would provide trust for participation in co-curricular activities, which are important for the overall personality development.

SLA AND SCHOOL WILL ALSO AIM FOR

- ▶ Proficient & confident communication ability for each & every student.
- ▶ Motivational support from SLA team to individual student.

UNIFORM BATCH

Classroom PROGRAM

2 Year Course

Regular Classroom Course

NEET-2024

SLA 2 Year Regular Classroom Course for NEET (2022-2024) helps you to delve into the core concepts while helping you have a deeper understanding of the subjects. The course supports you in discussing and clarifying your infinite doubts anytime, any day, anywhere. The regular classroom course for Medical Division will run on the same lines and pedagogy as the highly successful Medical division in SLA



CLASS SCHEDULE: 6 days & 36 hours/week, Total - 2300 hours of classroom teaching

STUDY CONTENT

Complete Study Material (6 Modules)

SLA provides its best to the students with a set of study material for NEET that has been scientifically prepared to ensure comprehension of even the most difficult topics. The study material covers every aspect of each topic and is completely self-sufficient.

KEY FEATURES

- ▶ Extensive Classroom Sessions – comprehensive and integrated study material – Learning through discussion – Testing & Assessment System.
- ▶ PERSONAL ATTENTION TO EVERY STUDENT
- ▶ Class Test are conducted regularly in the class to assess the understanding of the topics by the students.
- ▶ Many of these would be in the form of Surprise Quizzes with reward that students are forced to be regular in their preparation.

PRACTICE

- ▶ 48 - Monthly Tests
- ▶ 60 - Weekly Tests
- ▶ Personalized performance Dashboard

UNIFORM BATCH

Classroom PROGRAM

2 Year Course

Regular Classroom Course

IIT-JEE-2024

SLA 2 Year Regular Classroom Course for IIT-JEE (2022-2024) helps you to delve into the core concepts while helping you have a deeper understanding of the subjects. The course supports you in discussing and clarifying your infinite doubts anytime, any day, anywhere. The regular classroom course for Medical Division will run on the same lines and pedagogy as the highly successful IIT-JEE division in SLA



CLASS SCHEDULE: 6 days & 36 hours/week, Total - 2300 hours of classroom teaching

STUDY CONTENT

Complete Study Material (6 Modules)

SLA provides its best to the students with a set of study material for IIT-JEE that has been scientifically prepared to ensure comprehension of even the most difficult topics. The study material covers every aspect of each topic and is completely self-sufficient.

KEY FEATURES

- ▶ Extensive Classroom Sessions – comprehensive and integrated study material – Learning through discussion – Testing & Assessment System.
- ▶ PERSONAL ATTENTION TO EVERY STUDENT
- ▶ Class Test are conducted regularly in the class to assess the understanding of the topics by the students.
- ▶ Many of these would be in the form of Surprise Quizzes with reward that students are forced to be regular in their preparation.

PRACTICE

- ▶ 48 - Monthly Tests
- ▶ 80 - Weekly Tests
- ▶ Personalized performance Dashboard

MEDITECH BATCH(CIP)

Classroom PROGRAM

2 Year Course

Regular Classroom Course

MHT-CET-2024 (CIP)

SLA 2 Year Regular Classroom Course for CET (2022-2024) helps you to delve into the core concepts while helping you have a deeper understanding of the subjects. The course supports you in discussing and clarifying your infinite doubts anytime, any day, anywhere. The regular classroom course for Medical & Technical Division will run on the same lines and pedagogy as the highly successful Medical & Technical division in SLA



CLASS SCHEDULE: 6 days & 18 hours/week, Total - 864 hours of classroom teaching

STUDY CONTENT

Complete Study Material

SLA provides its best to the students with a set of study material for CET that has been scientifically prepared to ensure comprehension of even the most difficult topics. The study material covers every aspect of each topic and is completely self-sufficient.

KEY FEATURES

- ▶ Extensive Classroom Sessions – comprehensive study material – Learning through discussion – Testing & Assessment System.
- ▶ PERSONAL ATTENTION TO EVERY STUDENT
- ▶ Class Test are conducted regularly in the class to assess the understanding of the topics by the students.
- ▶ Many of these would be in the form of Surprise Quizzes with reward that students are forced to be regular in their preparation.

PRACTICE

- ▶ 48 - Monthly Tests
- ▶ 80 - Weekly Tests
- ▶ Personalized performance Dashboard

*T&C Apply

MEDITECH BATCH

Classroom PROGRAM

2 Year Course

Regular Classroom Course

MHT-CET-2024

SLA 2 Year Regular Classroom Course for CET (2022-2024) helps you to delve into the core concepts while helping you have a deeper understanding of the subjects. The course supports you in discussing and clarifying your infinite doubts anytime, any day, anywhere. The regular classroom course for Medical & Technical Division will run on the same lines and pedagogy as the highly successful Medical & Technical division in SLA



CLASS SCHEDULE: 6 days & 18 hours/week, Total - 864 hours of classroom teaching

STUDY CONTENT

Complete Study Material

SLA provides its best to the students with a set of study material for CET that has been scientifically prepared to ensure comprehension of even the most difficult topics. The study material covers every aspect of each topic and is completely self-sufficient.

KEY FEATURES

- ▶ Extensive Classroom Sessions – comprehensive study material – Learning through discussion – Testing & Assessment System.
- ▶ PERSONAL ATTENTION TO EVERY STUDENT
- ▶ Class Test are conducted regularly in the class to assess the understanding of the topics by the students.
- ▶ Many of these would be in the form of Surprise Quizzes with reward that students are forced to be regular in their preparation.

PRACTICE

- ▶ 48 - Monthly Tests
- ▶ 80 - Weekly Tests
- ▶ Personalized performance Dashboard

*T&C Apply

FOUNDATION BUILDER

3 Year Course

FOUNDATION

IIT-JEE / NEET 2024

The key to success in Engineering / Medical entrance exams lies in building and reinforcing basic fundamentals and concepts. In this course, not only will a student start building a strong foundation, but it will also give the student enough time to learn and practice the core concepts as the course is spread over a longer duration which makes the learning process smoother and stress free, resulting in better outcome.



CLASS SCHEDULE

2 days & 6 hours/week, Total 320 hours of classroom teaching in 1st year and varies from second year onwards depending on the stream (JEE/NEET)

STUDY CONTENT

Complete Study Material (2 Modules per subject)

Modules for Science (Physics, Chemistry & Biology), Maths, S.Studies and MAT

SLA provides its students with a set of study material that has been scientifically prepared to ensure comprehension of even the most difficult topics.

The study material covers every aspect of each topic and is completely self-sufficient.

KEY FEATURES

- ▶ Building the foundation in core concepts and fundamentals in Science and Math
- ▶ Developing the analytical and reasoning ability of the students. Specialized focus and classes will be conducted for exams like **NTSE & various Olympiads**
- ▶ Class Tests are conducted regularly in the class to assess the understanding of the topics by the students. Many of these would be in the form of Surprise Quizzes, so that students are forced to be regular in their preparation.

PRACTICE

- ▶ 6 - Review Tests
- ▶ Detailed Test Analysis
- ▶ Test Series for NTSE, PRMO / IOQM & onwards, IJSO and other Olympiads.
- ▶ Personalized performance Dashboard

STD. XI

Chapter-wise schedule of lecture hours

STD. XI

PHYSICS

Chapter 1	Physical world +	8 Hours
Chapter 2	Units and measurements	
Chapter 3	Motion in a straight line	12 Hours
Chapter 4	Motion in a plane (without circular motion)	12 Hours
Chapter 5	Laws of motion	15 Hours
Chapter 6	Work, energy and power	10.5 Hours
Chapter 7	Circular motion	10.5 Hours
Chapter 8	System of particles and Rotational motion	21 Hours
Chapter 9	Gravitation	12 Hours
Chapter 10	Mechanical properties of solids	9 Hours
Chapter 11	Mechanical properties of fluids	12 Hours
Chapter 12	Thermal properties of matter	12 Hours
Chapter 13	Thermodynamics	10.5 Hours
Chapter 14	Kinetic theory of gases	9 Hours
Chapter 15	Oscillations	15 Hours
Chapter 16	Waves	15 Hours

STD. XI

CHEMISTRY

Chapter 1	Some basic concepts of Chemistry	13.5 Hours
Chapter 2	Structure of atom	15 Hours
Chapter 3	Classification of elements and periodicity in properties	6 Hours
Chapter 4	Chemical bonding and molecular structure	15 Hours
Chapter 5	States of matter	10.5 Hours
Chapter 6	Thermodynamics	18 Hours
Chapter 7	Equilibrium	24 Hours
Chapter 8	Redox Reactions	9 Hours
Chapter 9	Hydrogen	9 Hours
Chapter 10	The s-block elements	9 Hours
Chapter 11	The p-block elements	10.5 Hours
Chapter 12	Organic chemistry: Some basic principles and techniques	21 Hours
Chapter 13	Hydrocarbons	18 Hours
Chapter 14	Environmental Chemistry	4.5 Hours

STD. XI

BIOLOGY

Chapter 1	The Living World	6 Hours
Chapter 2	Biological Classification	7.5 Hours
Chapter 3	Plant Kingdom	12 Hours
Chapter 4	Animal Kingdom	12 Hours
Chapter 5	Morphology of flowering plants	21 Hours
Chapter 6	Anatomy of flowering plants	12 Hours
Chapter 7	Structural organisation in animals	21 Hours
Chapter 8	Cell: the unit of life	13.5 Hours
Chapter 9	Biomolecules	15 Hours
Chapter 10	Cell cycle and cell division	7.5 Hours
Chapter 11	Transport in plants	10.5 Hours
Chapter 12	Mineral nutrition	6 Hours
Chapter 13	Photosynthesis in higher plants	12 Hours
Chapter 14	Respiration in plants	9 Hours
Chapter 15	Plant growth and development	9 Hours
Chapter 16	Digestion and absorption	12 Hours
Chapter 17	Breathing and exchange of gases	9 Hours
Chapter 18	Body fluids and circulation	12 Hours
Chapter 19	Excretory products and their elimination	12 Hours
Chapter 20	Locomotion and movement	12 Hours
Chapter 21	Neural control and coordination	13.5 Hours
Chapter 22	Chemical coordination and integration	9 Hours

STD. XII

Chapter-wise schedule of lecture hours

STD. XII

PHYSICS

Chapter 17	Electric charges & fields	18 Hours
Chapter 18	Electrostatic potential and capacitance	15 Hours
Chapter 19	Current electricity	18 Hours
Chapter 20	Moving charges and magnetism	21 Hours
Chapter 21	Magnetism and matter	12 Hours
Chapter 22	Electromagnetic induction	12 Hours
Chapter 23	Alternating current	7.5 Hours
Chapter 24	Electromagnetic waves	4.5 Hours
Chapter 25	Ray optics and Optical instruments	18 Hours
Chapter 26	Wave optics	12 Hours
Chapter 27	Dual nature of radiation & matter	9 Hours
Chapter 28	Atoms	12 Hours
Chapter 29	Nuclei	9 Hours
Chapter 30	Semiconductor Electronics: Materials, Devices & Simple Circuits	9 Hours

STD. XII

CHEMISTRY

Chapter 15	The solid state	12 Hours
Chapter 16	Solutions	12 Hours
Chapter 17	Electrochemistry	15 Hours
Chapter 18	Chemical kinetics	12 Hours
Chapter 19	Surface chemistry	9 Hours
Chapter 20	General principles and processes of isolation of elements	7.5 Hours
Chapter 21	The p-block elements	15 Hours
Chapter 22	The d-and f-block elements	10.5 Hours
Chapter 23	Coordination compounds	15 Hours
Chapter 24	Haloalkanes & haloarenes	12 Hours
Chapter 25	Alcohols, phenols and ethers	12 Hours
Chapter 26	Aldehydes, ketones and carboxylic acids	15 Hours
Chapter 27	Organic compounds containing Nitrogen	10.5 Hours
Chapter 28	Biomolecules	7.5 Hours
Chapter 29	Polymers	6 Hours
Chapter 30	Chemistry in everyday life	4.5 Hours

STD. XII

BIOLOGY

Chapter 23	Reproduction in organisms	9 Hours
Chapter 24	Sexual reproduction in flowering plants	7.5 Hours
Chapter 25	Human reproduction	9 Hours
Chapter 26	Reproductive health	9 Hours
Chapter 27	Principles of inheritance and variation	18 Hours
Chapter 28	Molecular basis of inheritance	15 Hours
Chapter 29	Evolution	10.5 Hours
Chapter 30	Human health and disease	10.5 Hours
Chapter 31	Strategies for enhancement in food production	15 Hours
Chapter 32	Microbes in human welfare	6 Hours
Chapter 33	Biotechnology: principles and processes	7.5 Hours
Chapter 34	Biotechnology and its applications	7.5 Hours
Chapter 35	Organisms and populations	3 Hours
Chapter 36	Ecosystem	6 Hours
Chapter 37	Biodiversity and conservation	3 Hours
Chapter 38	Environmental issues	3 Hours

Number of teaching hours of Basic Mathematics is not included in the above planner which is usually taught at the start of Course. Teaching hours for revision / doubt solving during the months of December 2022, and during January, March and April of 2024 are also not mentioned. Schedule for the same is communicated to students from time to time.

STD. XI

Chapter-wise schedule of lecture hours

STD. XI

PHYSICS

Chapter 1	Physical world +	8 Hours
Chapter 2	Units and measurements	
Chapter 3	Motion in a straight line	12 Hours
Chapter 4	Motion in a plane (without circular motion)	12 Hours
Chapter 5	Laws of motion	15 Hours
Chapter 6	Work, energy and power	10.5 Hours
Chapter 7	Circular motion	10.5 Hours
Chapter 8	System of particles and Rotational motion	21 Hours
Chapter 9	Gravitation	12 Hours
Chapter 10	Mechanical properties of solids	9 Hours
Chapter 11	Mechanical properties of fluids	12 Hours
Chapter 12	Thermal properties of matter	12 Hours
Chapter 13	Thermodynamics	10.5 Hours
Chapter 14	Kinetic theory of gases	9 Hours
Chapter 15	Oscillations	15 Hours
Chapter 16	Waves	15 Hours

STD. XI

CHEMISTRY

Chapter 1	Some basic concepts of Chemistry	13.5 Hours
Chapter 2	Structure of atom	15 Hours
Chapter 3	Classification of elements and periodicity in properties	6 Hours
Chapter 4	Chemical bonding and molecular structure	15 Hours
Chapter 5	States of matter	10.5 Hours
Chapter 6	Thermodynamics	18 Hours
Chapter 7	Equilibrium	24 Hours
Chapter 8	Redox Reactions	9 Hours
Chapter 9	Hydrogen	9 Hours
Chapter 10	The s-block elements	9 Hours
Chapter 11	The p-block elements	10.5 Hours
Chapter 12	Organic chemistry: Some basic principles and techniques	21 Hours
Chapter 13	Hydrocarbons	18 Hours
Chapter 14	Environmental Chemistry	4.5 Hours

STD. XI

MATHEMATICS

Chapter 1	Sets +	12 Hours
Chapter 2	Relations and functions	
Chapter 3	Trigonometric functions	13.5 Hours
Chapter 4	Principle of mathematical induction	3 Hours
Chapter 5	Complex numbers and quadratic equations	21 Hours
Chapter 6	Linear inequalities	9 Hours
Chapter 7	Permutations and combinations	9 Hours
Chapter 8	Binomial theorem	9 Hours
Chapter 9	Sequences and series	10.5 Hours
Chapter 10	Straight lines	8 Hours
Chapter 11	Conic sections	36 Hours
Chapter 12	Introduction to three dimensional geometry	3 Hours
Chapter 13	Limits and derivatives	12 Hours
Chapter 14	Mathematical reasoning	3 Hours
Chapter 15	Statistics +	9 Hours
Chapter 16	Probability	

STD. XII

Chapter-wise schedule of lecture hours

STD. XII

PHYSICS

Chapter 17	Electric charges & fields	18 Hours
Chapter 18	Electrostatic potential and capacitance	15 Hours
Chapter 19	Current electricity	18 Hours
Chapter 20	Moving charges and magnetism	21 Hours
Chapter 21	Magnetism and matter	12 Hours
Chapter 22	Electromagnetic induction	12 Hours
Chapter 23	Alternating current	7.5 Hours
Chapter 24	Electromagnetic waves	4.5 Hours
Chapter 25	Ray optics and Optical instruments	18 Hours
Chapter 26	Wave optics	12 Hours
Chapter 27	Dual nature of radiation & matter	9 Hours
Chapter 28	Atoms	12 Hours
Chapter 29	Nuclei	9 Hours
Chapter 30	Semiconductor Electronics: Materials, Devices & Simple Circuits	9 Hours
Chapter 31	Communication Systems	3 Hours

STD. XII

CHEMISTRY

Chapter 15	The solid state	12 Hours
Chapter 16	Solutions	12 Hours
Chapter 17	Electrochemistry	15 Hours
Chapter 18	Chemical kinetics	12 Hours
Chapter 19	Surface chemistry	9 Hours
Chapter 20	General principles and processes of isolation of elements	7.5 Hours
Chapter 21	The p-block elements	15 Hours
Chapter 22	The d-and f-block elements	10.5 Hours
Chapter 23	Coordination compounds	15 Hours
Chapter 24	Haloalkanes & haloarenes	12 Hours
Chapter 25	Alcohols, phenols and ethers	12 Hours
Chapter 26	Aldehydes, ketones and carboxylic acids	15 Hours
Chapter 27	Organic compounds containing Nitrogen	10.5 Hours
Chapter 28	Biomolecules	7.5 Hours
Chapter 29	Polymers	6 Hours
Chapter 30	Chemistry in everyday life	4.5 Hours

STD. XII

MATHEMATICS

Chapter 17	Relations and functions	9 Hours
Chapter 18	Inverse trigonometric functions	9 Hours
Chapter 19	Matrices	12 Hours
Chapter 20	Determinants	7.5 Hours
Chapter 21	Continuity and differentiability	15 Hours
Chapter 22	Application of derivatives	18 Hours
Chapter 23	Integrals	25.5 Hours
Chapter 24	Application of Integrals	4.5 Hours
Chapter 25	Differential equations	9 Hours
Chapter 26	Vector algebra	12 Hours
Chapter 27	Three dimensional geometry	12 Hours
Chapter 28	Probability	9 Hours

Number of teaching hours of Basic Mathematics is not included in the above planner which is usually taught at the start of Course. Teaching hours for revision / doubt solving during the months of December 2023, and during January, March and April of 2024 are also not mentioned. Schedule for the same is communicated to students from time to time.

MHT-CET State Board

Engg. & Phama. Entrance

At Simply Academy, the two year coaching for MHT-CET engineering entrance lays the foundation for fundamental understanding of core subjects. Regular tests, assessments and open forums enable students to stay on track.

Regular self-study and revision of topics done in class is important if a student wishes to achieve top scores at MHT-CET. The Program is designed to build logical, analytical and numerical skills that are key to success at the entrance. The Simply Academy MHT-CET 2 Year Classroom Program has been one of the most successful coaching programs for State Level Engineering Entrances ever since its Initiative in 2013.

Courses Offered

2 YEAR PROGRAM

For Std. X
appeared students

1 YEAR PROGRAM

For Std. XI
appeared students

Course Schedule (7 days per week)

	Vacation Session	Regular Session
Lecture Timings	7.00 am to 2.40 pm or 3.00 pm to 9.00 pm	7.00 am to 10.10 am or 6.00 pm to 9.10 pm
Duration	6 hrs	3 hrs
Weekly Schedule	Lectures from Monday to Saturday, Test as well as lectures on Sunday	

About Tests

Nature	Chapterwise, Grouped chapters and Full portion tests for HSC as well as Engineering Entrance Test	A booklet of Test Schedule and Test Record for the entire duration of course is given to students on the first day of course commencement.
No. of Tests	60 (MCQ type : MHT-CET Level) 12 (Subjective type : Board pattern) 3 (Prelims for Boards) 20 (Prelims for Entrance Test)	

About Fees

- Kindly collect the Fee Details sheet from the front office.
- Parents are requested to note that Simply Academy does not offer arbitrary discounts. But if an academically good and hard-working student is in genuine need of financial support, the student may apply for a scholarship.
- A written application accompanied by appropriate financial documents must be submitted to the Branch Manager with student details.
 - The decision of the management will be final in matters of approval of the scholarship and its amount.
 - The fees finalized can be paid in six monthly installments.
 - There is a 10% rebate in fees if the total fee is paid up front.
 - Students can also avail of 10% sibling discount, where applicable.

STATE BOARD Coaching

Std. XI & Std. XII

The 'Boards Only' Coaching is ideal for students who plan to pursue courses like Architecture or Pure Sciences, and do not wish to appear for competitive engineering entrances.

Courses Offered

2 YEAR PROGRAM

For Std. X
appeared students

1 YEAR PROGRAM

For Std. XI
appeared students

Course Schedule (7 days per week)

	Vacation Session	Regular Session
Lecture Timings	7.00 am to 2.40 pm or 3.00 pm to 9.00 pm	7.00 am to 10.10 am or 6.00 pm to 9.10 pm
Duration	6 hrs	3 hrs
Weekly Schedule	Lectures from Monday to Saturday, Test as well as lectures on Sunday	

About Tests

Nature	Chapterwise, Grouped chapters and Full portion tests for HSC Boards	A booklet of Test Schedule and Test Record for the entire duration of course is given to students on the first day of course commencement.
No. of Tests	24 in Std. XI for PCM 30 in Std. XII for PCM 6 in Std. XI for Biology 6 in Std. XII for Biology 4 prelims for Boards	

About Fees

- Rs. 09,000 per subject of Std. XI, Rs. 09,750 per subject of Std. XII. Taxes extra as applicable.
- GST is currently charged at 18%. The same is liable to change as per government rules & regulations.
- A student must enroll for a minimum of 3 subjects.
- The above fees can be paid in six monthly installments.
- There is a 10% rebate in fees if the total fee is paid up front.
- Students can also avail of 10% sibling discount, where applicable.

SSC

2018

Congratulations to all our achievers

"Guiding You to Career Success"

Simply Learnt Academy

NEET(UG) | IIT-JEE | MHT-CET | SCI & COM

96.00%



TEJAS AMBAVALE

ASHWINI JADHAV



95.00%

95.00%



SAURABH RAKESH

95.00%



SNEHAL DETHE

SANIKA BAGWE



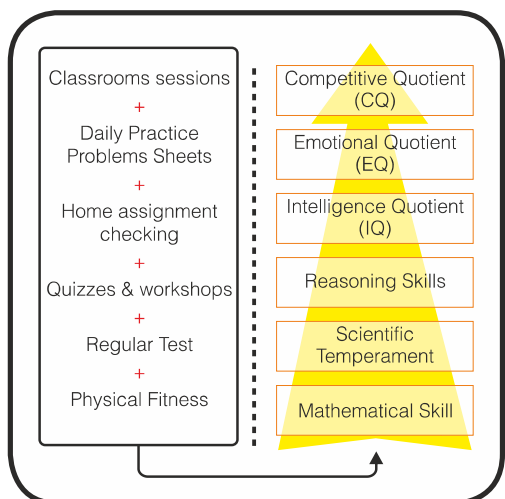
95.00%

95.00%



AMITA KASHID

**SSC
TOPPERS**



Audio-Visual Teaching



Personality Development Activities



Sports Activities: For fitness and physical Health



Guest Lectures & Special Motivational Seminars

2019

"Guiding You to Career Success"

Simply Learnt Academy

NEET(UG) | IIT-JEE | MHT-CET | SCIENCE

Congratulations to all our achievers

99.19%



DEEPASHREE
KULKARNI

SUMEDH
DIXIT



98.94%

97.59%



YASH
KUMTHEKAR

SHRUTI PADMA



94.00%

93.05%



MAYURI ANGULE

91.21%



VIPUL KACHAVE

RASHI MOJIDRA



90.65%

89.00%



VIVEK GOSWAMI

SHUBHAM SHINDE



89.00%

88.00%



SANDALI GIRI

87.99%



VIVEK PATIL

VAISHNAVI



86.52%

83.00%



TANMAY CHACHAD

AKSHAY SANGLE



80.00%

80.00%



RITIKA

2020

"Guiding You to Career Success"
**Simply Learnt
Academy**

NEET(UG) | IIT-JEE | MHT-CET | SCIENCE

96.00%



ATHARV MHATRE

KHUSHI GUPTA



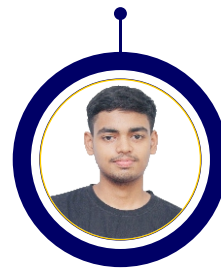
89.67%

88.00%



MANSI DOSHI

SAHIL SAPRE



81.00%

94.42%



PAWAN DUKARE

MAHESH KOKARE



92.14%

90.03%



ATHARV MHATRE

SSC

2020

"Guiding You to Career Success"

Simply Learnt Academy

NEET(UG) | IIT-JEE | MHT-CET | SCIENCE

92.00%



HEM NAKAR

PRATHAM MISHRA



91.00%

89.20%



SHREE SHINDE

SNEHA CHAUBEY



89.00%

88.00%



LAVNYA CHAPDE

86.00%



SANTOSINI SAHU

PRANAV SURVE



85.40%

85.00%



ADITI SAWALE

ABHEDYA TEMBE



81.00%

Notes to parents

Attendance, Test performance & Related matters



Batch size

Not less than 30 and not more than 50.

Parents and students must note that, it is not possible to run a batch with less number of students. Teachers need good number of audience for their better delivery of lectures. To create ranking of students in test scores, more the number, better is the comparison chart.

As per our experience, in a batch size of 30, we certainly have some students in the batch who keep asking questions / doubts during lectures and this makes learning / teaching very interesting. In a very small batch size, sometimes all students are introverts and do not ask any questions or doubts.

What happens if batch size is incomplete

In the batch size is incomplete, say, numbers are 20, on the scheduled day of start, we shall start the batch. We will continue teaching with this batch of 20 students for upto one month. Normally, more students join and the batch gets filled.

However if, even after a month, the batch size is incomplete, we transfer students to the nearest branch. In case you do not want to go to the nearest branch, the refund of the fees is offered (deducting the registration charges which is non-refundable.)

Communication with parents about attendance and test performance

It is done with the help of software and an app. Parents get automated SMSes/emails about the regular attendance and test performance of their wards. The records are maintained by the institute as a routine.

Sometimes, a parent complains that the regular message or emails are not being sent and that the institute is not communicating properly. This could be due to a glitch in the software or the system.

In such cases, the onus is on the parents to inform the institute regards the lack of communication. Our team will look into the matter and will attempt to resolve the same at the earliest.

In the meantime, the parent is welcome to visit the office of the branch on a regular basis (even daily) to know about child's attendance and test results. He can also meet teachers on regular basis to discuss academic progress of the child.

How will the student cope up if he / she is joining late?

Of course, a student joining late has disadvantages. He / she will have to work hard to bring himself / herself on par. He / she can also watch the videos of the missed lectures. After completing the video lecture, he / she can ask all the doubts to the respective subject teachers.

Repetition of lectures is not possible.

Dealing with late-comers

Students must be on their seat in the classroom at least 5 minutes before the lecture starts.

A latecomer is a student who comes after the teacher has entered the classroom and closed the door. Late just a minute, and a few minutes late is one and the same. All such students are asked to enter the classroom together, in one go. This causes the least disturbance to the teachers.

There are teachers who are too disciplined and do not like students entering late in their classroom. If teacher refuses for late entry, office staff cannot interfere. Teacher's decision is the final.

In such a case, we can only sympathize with parents. You must support the institute for all the disciplinary actions.

There are few students who come late regularly. Beyond a point, parents are called in the office to discuss the possible solution (and alternatives).



General Information

When we adhere to pre-defined systems and processes, we ensure higher levels of efficiency for the institute and our students. The key rules and regulations of the institute are outlined here for your quick reference.

Mode of payment

Mode of payment Fees can be paid by local cheque in favor of 'Simply Learnt Academy' Preferred mode of payment for fees is by Cheque / Phone Pay / Google Pay / Bank Transfer.

Note :

1. All PDCs - in case of the installment option should be given at the time of admission.
2. In such cases, the admission form will NOT be accepted without the PDCs.
3. Parents would be given an acknowledgment slip with the details of the PDCs submitted.
4. In case of any cheque being dishonoured, a penalty as applicable by the bank will be levied for every default.
5. Any change in GST (currently @18%) by the government will be applicable.

Rebate On Fees

Fees are fixed and no arbitrary discounts are offered to anyone, irrespective of personal relationships and / or financial conditions.

Refund Of Fees

There is absolutely no refund of fees under any circumstances (including change of plans, change of residences, transfers, change of school, change of stream, etc.).

Disclaimer clause for all courses

- Normally, in any institute the fee once paid is neither refundable nor adjustable under any circumstances. So, when a student joins a course, in spite of the fact that he may not be satisfied with the services provided, he has to continue there because fees will not be refunded.
- We are supremely confident of the quality of our teaching and services rendered to the students. However, in order to be fair to the student community, we have a 'Disclaimer Clause' whereby a student has the option of disclaiming his admission within a fortnight of the start of the course. No questions will be asked. Full fees, minus the total GST, will be refunded on receipt of a written request signed by the student's parent/guardian.
- To take advantage of Disclaimer Clause, a student should have attended all the lectures on at least the first day of the course or first day after joining the course according to the timetable of his/her batch or course.
- Students can disclaim admission only in Std. XI itself, after which their admission would stand cancelled. The Disclaimer Clause is applicable only once: at the very first instance of joining the Institute. The Disclaimer Clause is NOT applicable if we receive the 'request' later than fourteen days from the start of the course.

Refund policy for students who fail in std. XI

A student detained in Std. XI can opt out of further coaching by presenting a certified copy of his Std. XI mark-sheet within 14 days of the declaration of results, whereby 35% of the fees paid would be refunded by cheque, less the total GST already paid. This refund policy is in place as the course for Std. XII at our institute commences while the students are still in Std. XI. By the time the Std. XI college results are declared, over 50% of the Std. XII syllabus is completed.

Periodical tests & mock tests

Regular Tests form a major feature of the coaching programme and are scheduled right through the course. MHT CET is a Computer Based Test (CBT). So we conduct tests accordingly. Tests are held in chapter-wise, combination chapters as well as full syllabus wise in each subject. Test papers are machine graded to ensure accuracy and comparative rankings.

Faculty

Professionally qualified and experienced, each faculty member ensures personal attention to the individual needs and shortcomings of each student.

Study material

Authentic, comprehensive yet concise, the study material comes in form of professionally printed books/booklets. These obviate the need to purchase or refer to other books.

Parent-student Counselling

Efforts are made to involve both parents and their children, on a one-to-one basis, in cases where there seems to be a lack of commitment. Regular updates on each student's attendance and test performance are intimated through telephone, SMSes or e-mail.

Attendance

Attendance is a must for all lectures and tests. Absenteeism is severely discouraged and will be allowed only during an emergency. Parents are requested to ensure the regularity and punctuality of their wards for the lectures and tests.

Student responsiveness

Commensurate with our sincere efforts to provide the best guidance, we expect our students to be equally responsible by putting in hard work throughout the course period. These courses at our institute are not for those who just enrol and expect miracles to happen.

Discipline

Disorderly conduct and/or non-compliance with institution's rules and regulations would disqualify students from further attendance, solely at the cost and risk of the student's own future. In such cases, no part of the fees would be refunded.

